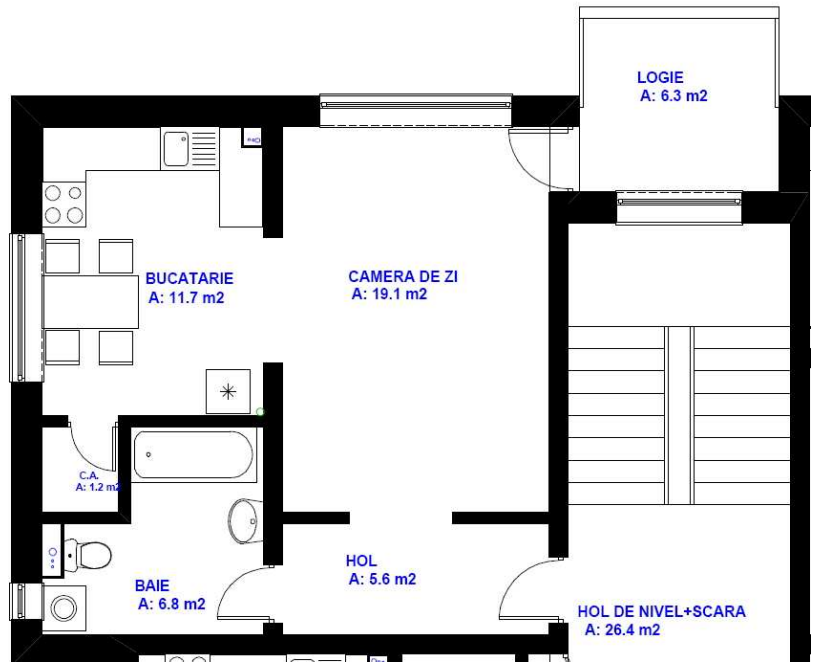


**Apartment TYPE 2**

App type	Bloc	App	No of rooms	Surface	Stage of completion	Floor	Parking price (VAT included)	Apartment price (no VAT)	Apartment price (5% VAT)	Apartment price (TOTAL)
2	A2	4	1	44.4	finished - no balcony	ground floor	3.100	36,571	38400	41.500
2	A4	2	1	44.4	finished - no balcony	ground floor	3.100	36,571	38400	41.500
2	A4	4	1	44.4	finished - no balcony	ground floor	3.100	35,238	37000	40.100

Sketch



Position of the blocs of flats in "Dumbrava" Residential Housing